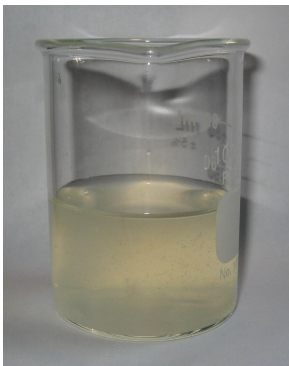
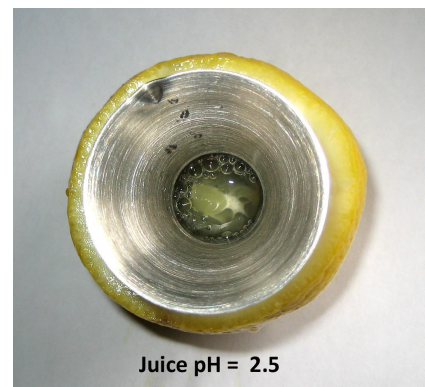


Freshly Squeezed Lemon Juice Added to MMS1 Reduced CLO2

This test was preformed to determine if lemon juice added to MMS1 would reduce chlorine dioxide (CLO2) content. It did.

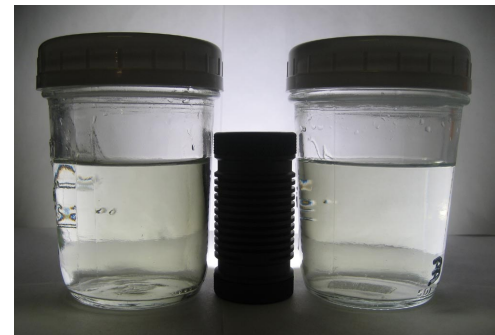
The following photos show how lemon juice was extracted from a fresh lemon. The idea was to not include any oil from the lemon rind. That was done by carefully removing a band of rind with a knife and then cutting off the exposed end of the lemon interior. The knife was washed after cutting off the rind and before cutting off the lemon end. The screw-in juice extractor was inserted and some juice was squeezed out into a glass container.



50 ml of 73 ppm CDS plus
10 ml of fresh lemon juice.



120 ml distilled water in both



120 ml distilled water plus a
3 drop MMS1 dose in both



120 ml distilled water plus a 3 drop
MMS1 dose. Left has additional 10 ml
DW & right has 10 ml of lemon juice.



120 ml distilled water plus 3 drop
MMS1 dose + 10 ml DW (L), 10 ml
fresh lemon juice (R) plus 60 ml of
0.5% HCL in both. (sim stomach acid)



120 ml distilled water plus 3 drop
MMS1 dose + 10 ml DW (L), 10 ml
fresh lemon juice (R) plus 60 ml of
0.5% HCL in both. (sim stomach acid)

Un-retouched photos. Due to low pH (both 1.5), not possible to measure CLO2 ppm. 26 May 2016